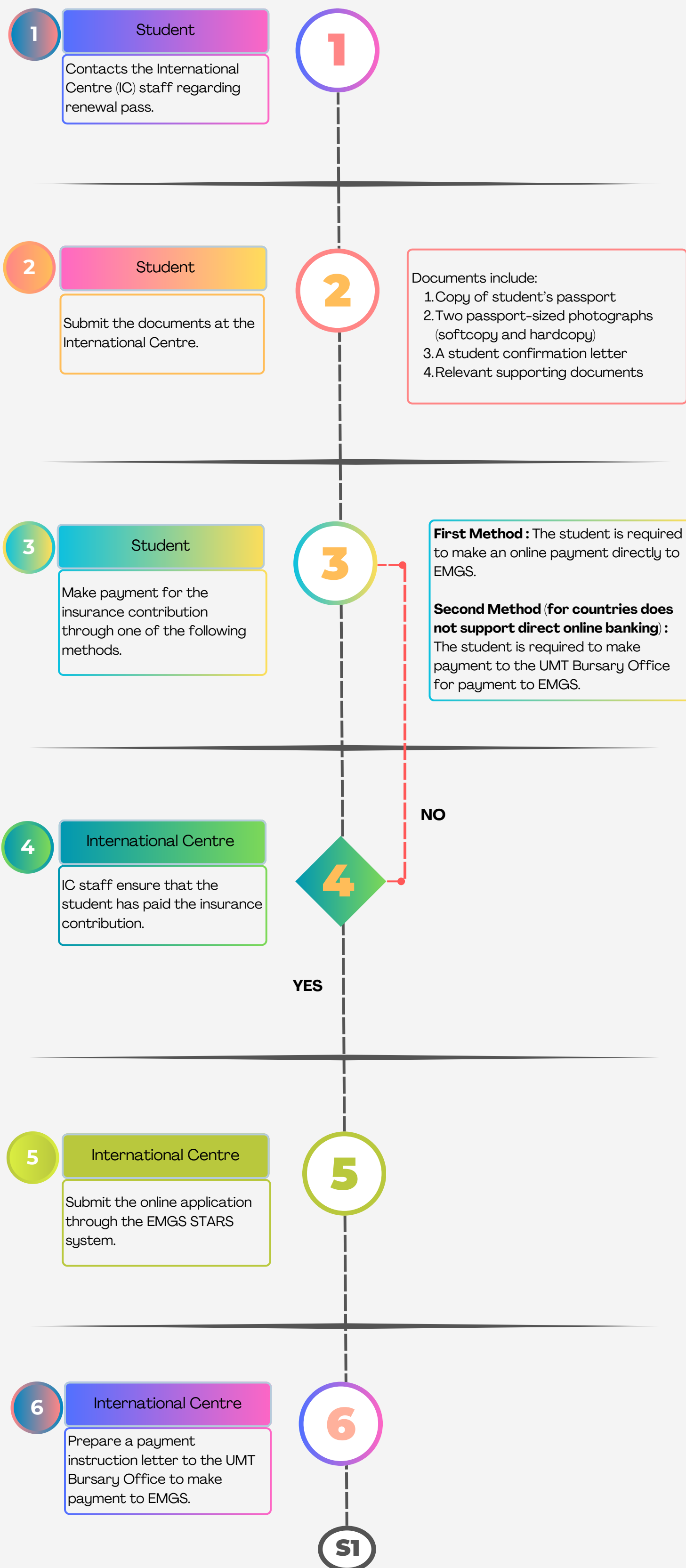


# INTERNATIONAL STUDENT PASS (RENEWAL/ EXTENSION)

## PROCESS

## REMARKS



# INTERNATIONAL STUDENT PASS (RENEWAL/ EXTENSION)

## PROCESS

## REMARKS

7

International Centre

Receives proof of payment to EMGS from the UMT Bursary Office.

7

8

International Centre

Prepare, signing the IM55 form and verifying the related documents.

8

9

International Centre

Send the Calling Visa application to EMGS via Pos Laju.

9

10

International Centre

Receives the support letter from EMGS and prepares the student pass application by completing form IM55.

10

11

International Centre

Submits the application to the Immigration Department in Kuala Terengganu.

11

12

International Centre

Receives the acknowledgement of receipt from the Kuala Terengganu Immigration Office.

12

S1

# INTERNATIONAL STUDENT PASS (RENEWAL/ EXTENSION)

## PROCESS

## REMARKS

13

Student

Student must submit the original passport at the International Centre.

13

14

International Centre

Receives the passport from the international student.

14

15

International Centre

Take the passport to the Kuala Terengganu Immigration Office for visa sticker endorsement and makes the required payment in accordance with the international student's country of origin.

15

16

International Centre

Returns the passport to the international student.

16

17

International Centre

Update the data in the International Student database.

17

COMPLETED